


Human NRG1 Beta1 Protein

Cat #: PRP1954

Size: 10µg/50µg/500µg/1mg

Product Information

	Product Name: Human NRG1 Beta1 Protein		
REF	Catalog Number: PRP1954	LOT	Lot Number: Refer to product label
	Purity: > 99 % as determined by SDS-PAGE		
	Storage: Store at -20°C		Preparation method: <i>E. coli</i>
	Shipping: The product is shipped at ambient temperature.		

Background: Neuregulin 1 or NRG1 is one of four proteins in the neuregulin family that act on the EGFR family of receptors. This growth factor was originally identified as a 44 kD glycoprotein that interacts with the NEU / ERBB2 receptor tyrosine kinase to increase its phosphorylation on tyrosine residues. NRG1 is a trophic factor that has been implicated in neural development, neurotransmission, and synaptic plasticity. NRG1 has multiple isoforms that are generated by the usage of different promoters and alternative splicing of a single gene. Neuregulin 1 (NRG1) is essential for the development and function of multiple organ systems, and its dysregulation has been linked to diseases such as cancer and schizophrenia. NRG1 is a schizophrenia candidate gene and plays an important role in brain development and neural function. Schizophrenia is a complex disorder, with etiology likely due to epistasis.

Sequence: Amino acid sequence derived from Human NRG1 Beta1 Protein Q02297 (S20-K241) was expressed.

Protein length: The Recombinant Human NRG1 Beta1 Protein consists of 220 amino acids and predicts a molecular mass of 24.04KDa

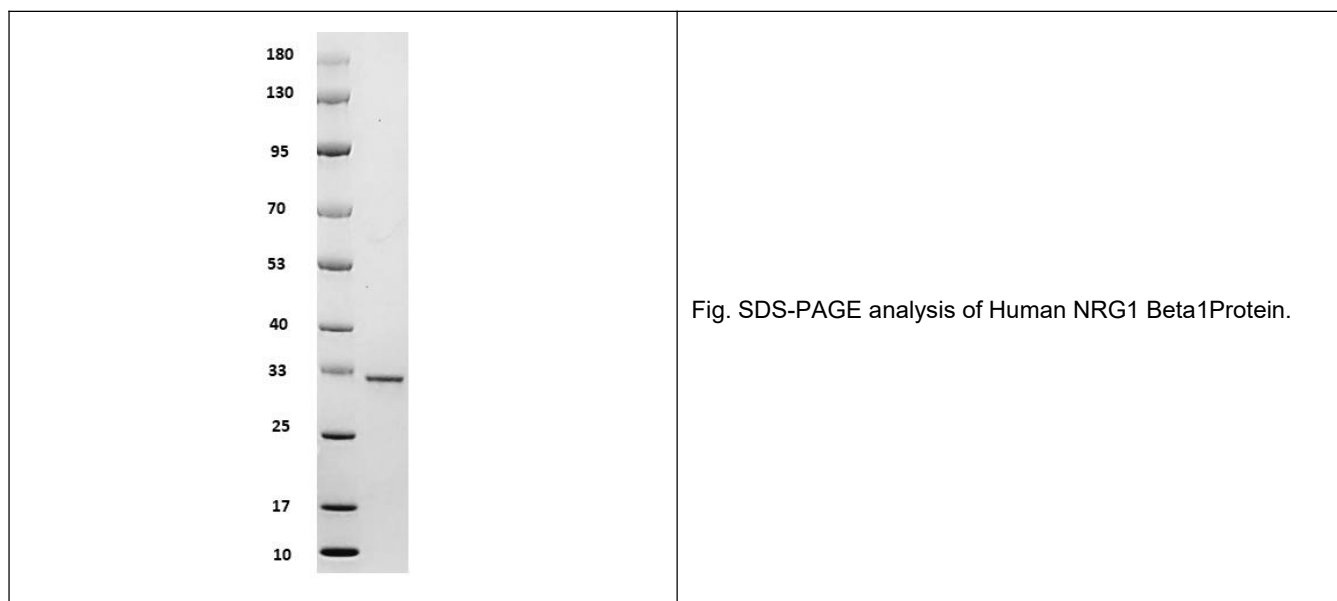
Biological Activity: Testing in progress.

Endotoxin: < 1.0 EU per µg of the protein as determined by the LAL method.

Formulation: Lyophilized from sterile 20 mM Tris with 150 mM NaCl, pH 7.4.

Storage Instructions: Lyophilized Recombinant Human NRG1 Beta1 Protein product should be stored desiccated below -20°C. Upon reconstitution, the protein should be stored at 4°C between 2-7 days and for future use below -20°C. For long term storage it is recommended to add a carrier protein (0.1% HSA or BSA). Please prevent freeze-thaw cycles.

Usage notes: Always centrifuge tubes before opening. It is recommended to reconstitute the lyophilized Recombinant Human NRG1 Beta1 Protein using the buffer we provided not less than 100µg/ml, which can then be further diluted to other aqueous solutions.



Note: The product listed herein is for research use only and is not intended for use in human or clinical diagnosis. Suggested applications of our products are not recommendations to use our products in violation of any patent or as a license. We cannot be responsible for patent infringements or other violations that may occur with the use of this product.